

NKBA

INNOVATION+ INSPIRATION

THE OFFICIAL PUBLICATION OF THE NATIONAL KITCHEN + BATH ASSOCIATION

BATH DESIGN IDEAS

VIRTUAL REALITY IN THE SHOWROOM
OUTDOOR KITCHENS WITH A VIEW
FAUCETS / TOILETS

HEART OF GLASS

A Maryland kitchen makeover deftly blends glass and texture for a modern-yet-warm appeal

BY KATY TOMASULO



Rather than traditional round recessed lights, the designer used trios of LEDs on rotating gimbals. The fixtures are mudded to the edge to eliminate trim.

PHOTO: ANICE HOCHLANDER

As repeat clients, the homeowners of this Potomac, Md., kitchen allowed Carnemark design+build a bit of freedom in how it approached their kitchen remodel—a trust that led to spectacular results. The couple's chief directives were to incorporate detail and precision into a space that is both fun to cook in as well as beautiful to experience.

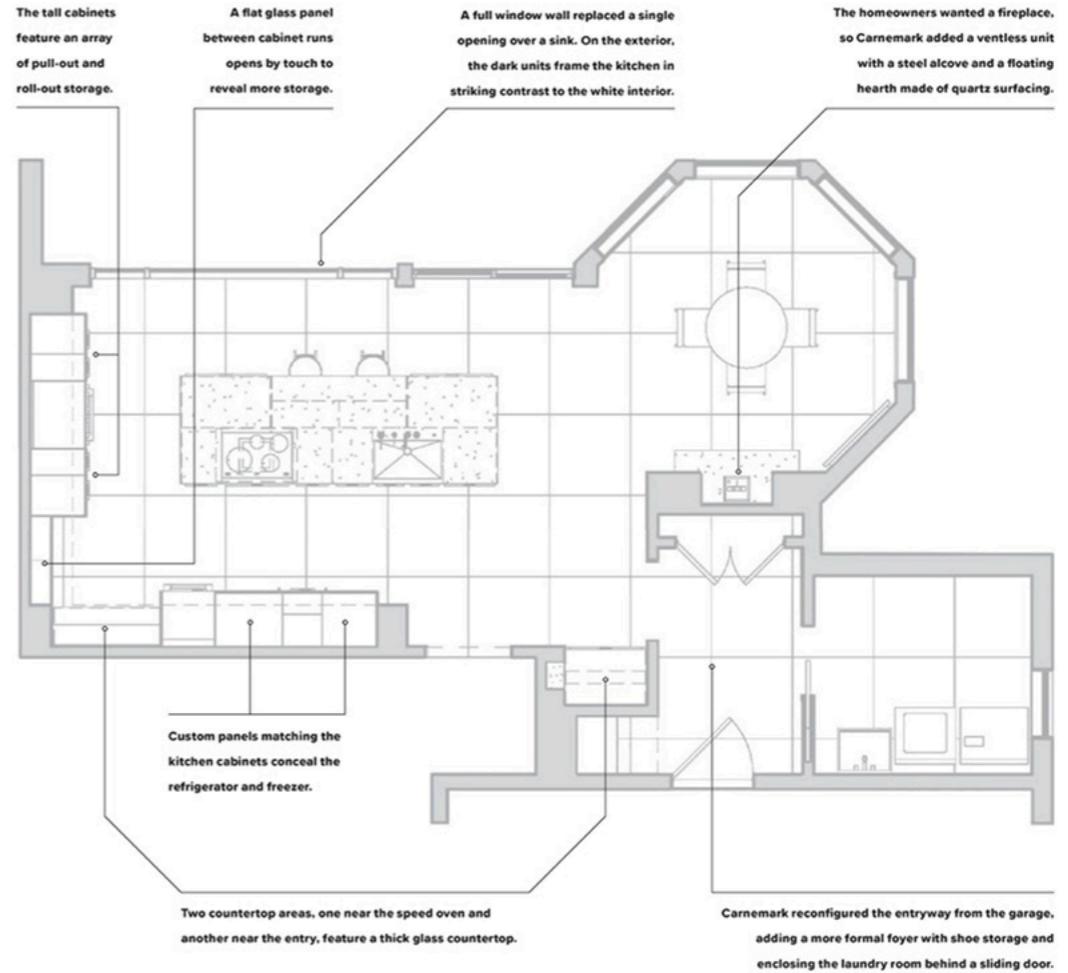
The size of the kitchen didn't change, but a complete shift in cabinet placement and island size transformed the room into something much more modern. On the outside wall, a single window over the sink gave way to a storefront-like window wall that opens to the backyard and pool. The effect is even more striking when the homeowners eat dinner on the patio and look back inward.

The idea of precision guided the designer toward glass and glossy textures, most noticeably in

the tall, lacquer-fronted cabinets that line the two perimeter walls, the 3-foot-by-3-foot glass floor tiles, and glass panels on the walls.

There also is a subtle interplay of textures. In two small areas, the design team chose 2½-inch-thick glass countertops with reflective depth and bubbles at the bottom. For the island, they contrasted the gleaming white space with black paper-based surfacing and beige lacquer cabinets.

"The homeowners let us keep it really clean but on the other hand sort of playful," says firm owner Jonas Carnemark, CKD. "Sometimes a space like this can feel cold, but the darker cabinets in the middle and the organic feel of the paper-based surfacing helped us straddle the line of not being too clean but still delivering the super-precise look they wanted." ■



- RESOURCES**
- Appliances:** Miele; Thermador
 - Cabinetry:** SieMatic
 - Countertops:** Richlite; ThinkGlass
 - Faucet:** Kohler
 - Flooring:** Coverings, Etc.
 - Hearth Cladding:** Silestone
 - Lights:** Tech Lighting; WAC Lighting
 - Range Hood:** Miele
 - Windows:** Solar Innovations

