

# H&D SOURCEBOOK

HOME & DESIGN

THE ULTIMATE  
RESOURCE  
GUIDE

FOR *Luxury*  
*DESIGN*  
AND *Fine*  
*INTERIORS*



DISPLAY UNTIL JANUARY 31, 2014  
\$6.95US \$7.95CAN WINTER





## Designers' Choice AWARDS

Our annual survey of area  
designers and architects

**E**ach year, *Home & Design* polls hundreds of industry professionals to discover their picks for the leaders in this innovative, ever-evolving community—as well as their votes of confidence in those just making their mark. We also ask area architects and designers to vote on their favorite industry resources, in categories ranging from audio/video and appliance showrooms to antiques dealers and art galleries. Following is a list of the complete survey results for 2014.



1. A stunning DC renovation by Pyramid Builders. 2. A restored 1980s residence by Stephen Moss. 3. A traditional kitchen in southern Maryland designed by Ann Zimmerman Watts with Premier Custom Built cabinetry and granite countertops.



PHOTOGRAPH BY JEFFREY M. HARRIS FOR THE REALTOR.COM



4. Nestle Santa Cruz multi modern and traditional elements with furnishings from Furniture from Scandinavia in a classically adorned den.  
 5. Colorful summer perennials and grasses complement the strong lines of a modern Bethesda home in a landscape by Kevin Corbett.



PHOTOGRAPH BY JEFFREY M. HARRIS FOR THE REALTOR.COM





5. A kitchen by **CAMERON** boasts stainless-steel cabinetry by **Stoffel** and **Silestone** countertops. 7. The stairwell of a contemporary condo in **Cleveland Park** is part of an open-plan design by **Eric Hartel**. 8. **Robert Delaney** shows a formal home in **DC** with custom stained fabrics.





5. Travis Price designs a dramatic, copper-and-glass frame with railroad accents in Cleveland Park, W. To accommodate adults & McLean garden with Japanese inspired and a granite fountain set in a sea of jungle table, 55. In a custom residence, Mark Sullender of Custom Design Concepts creates an unusual two-story circular library with an iron staircase.



## DESIGNERS' CHOICE AWARDS

### Hall of Fame Architect

Stephen Moss, FASIA, Mass.  
Architects, Bethesda, Maryland  
[www.stmoss.com](http://www.stmoss.com)

### Modern Architect

Travis Price, FASIA, Travis Price  
Architects, Washington, DC  
[www.travisprice.com](http://www.travisprice.com)

### Traditional Architect

Mark S. Sullender, Custom  
Design Concepts Architecture  
& Interiors, McLean, Virginia  
[cdh.com](http://cdh.com)

### Up & Coming Architect

Ben Shered, AIA, Ben Shered  
Architects, Washington, DC  
[bensheredarchitects.com](http://bensheredarchitects.com)

### Hall of Fame Custom Builder

Pyralis Builders, Annapolis,  
Maryland, [pyralisbuilders.com](http://pyralisbuilders.com)

### Favorite Design/Build Firm

CORNEMERZ  
Bethesda, Maryland  
[cornemerz.com](http://cornemerz.com)

### Hall of Fame Designer

Nancy Sarna-Cruz, NCIDQ,  
ESHA, LEED AP  
Nancy Sarna-Cruz Interiors  
Washington, DC  
[www.nscruz.com](http://www.nscruz.com)

### Up & Coming Designer

Nancy DeVore  
Nancy DeVore Interiors  
Washington, DC  
[www.ndi.com](http://www.ndi.com)

### Hall of Fame Landscape Firm

Samuels Landscape Architects  
& Consultants, Fairfax, Virginia  
[www.samuelslandscape.com](http://www.samuelslandscape.com)

### Hall of Fame Landscape Designer

Keris Catapano, ASLA  
Catapano-Hibby Landscape  
Architects, Annapolis, Maryland  
[catapanohibby.com](http://catapanohibby.com)

### Hall of Fame Kitchen Designer

Joni Zimmerman Harris, CKD,  
CBD, Design Solutions, Inc.  
Annapolis, Maryland  
[dshkitchen.com](http://dshkitchen.com)

# ARTIST'S TAKE

*Jonas Carnemark redesigns a home with the owners' vibrant art collection in mind*

The owners of a 1960s split-level house were ready to renovate. They hired Jonas Carnemark to upgrade the home's dated exterior, then turned to the interiors. A main priority: to create a space that would showcase the couple's extensive modern art collection.

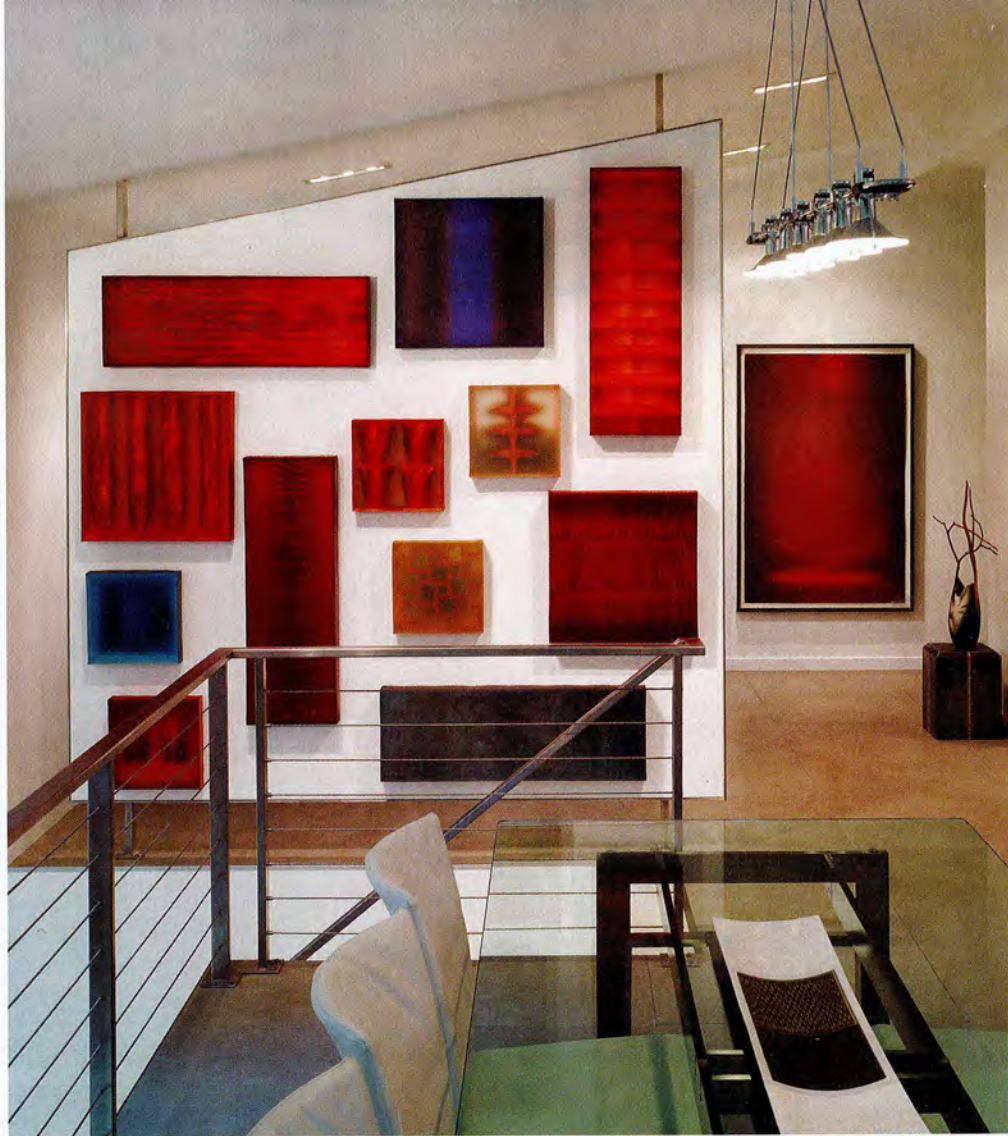
Carnemark and his team began with structural changes that included removing the wall separating the kitchen from the open-plan sitting area to give the cook a view of the outdoors as well as of the artwork displayed across the room. They also replaced one wall with a floating, trapezoid-shaped art wall edged in stainless steel and anchored top and bottom by stainless-steel legs. This wall "allows light to transfer between the rooms while creating a dramatic, two-sided frame for art," Carnemark says.

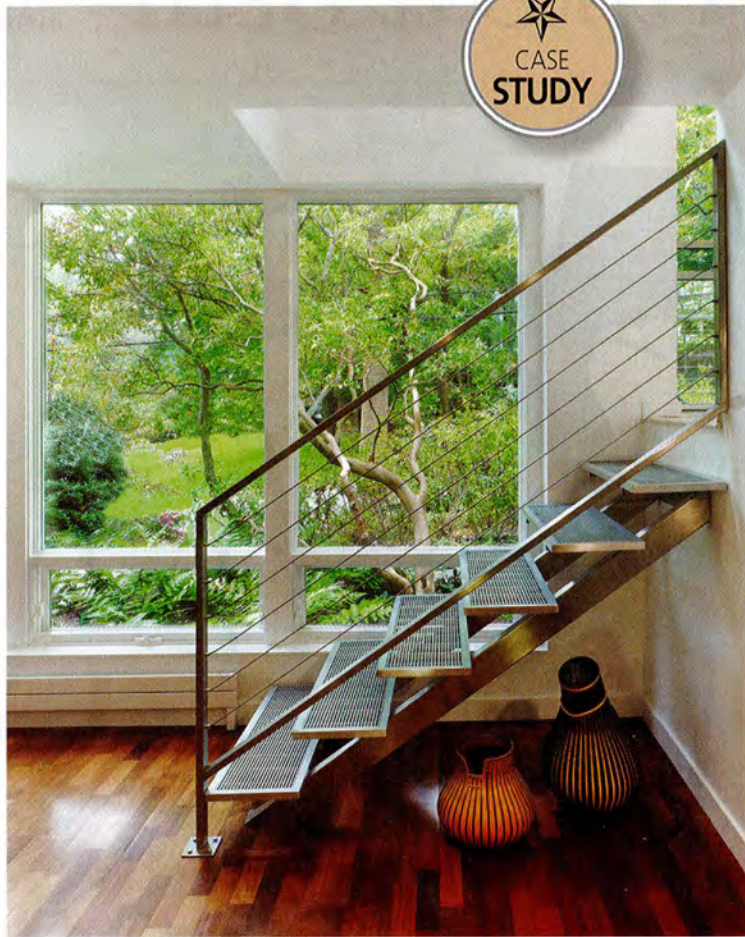
He and his team provided a clean backdrop for the art on the main floor with white-painted walls and large-format porcelain floor tiles that look like poured concrete in a light gray color. Downstairs, they retained the original wood floors, but added crisp, modern details on both levels such as the stainless-steel staircase and cable rails.

Before positioning the paintings and sculpture, Carnemark and his team completed an art inventory with the clients. "We created a plan for placement and color," he explains. "We did groupings of paintings and the clients decided which major pieces they wanted to showcase in the public spaces in the house."

Recessed halogen lights were placed strategically on gimbals that can be adjusted to illuminate each piece of art.

RENOVATION ARCHITECTURE & INTERIOR DESIGN: JONAS CARNEMARK, CR, CKD, CARNEMARK, Bethesda, Maryland.  
PHOTOGRAPHY: ANICE HOACHLANDER.





## JONAS CARNEMARK'S TRADE SECRETS

- When choosing which art should go where, ask yourself what is most important to you—what should be in a private versus a public area of the house.
- Light each room as if it will have art in it and it will be well lit. Light that bounces off walls gets rid of shadows in corners and reflected light is softer and nicer than direct light. It flatters the room's occupants.
- Don't be afraid of grouping art and creating art walls. You don't have to center every piece of art. Grouping it can show it off to better advantage.
- Make a plan that takes into account the colors and shapes of each piece of art with respect to your home. Doing an art inventory was very helpful in this project, so every piece was accounted for.

